

Network Setup Instructions

Windows 95/98

Once your network card has been properly installed, please complete the following steps to ensure the proper Mars Hill College Network configuration:

Step 1:

After closing all open applications, click on the start button, located in the bottom left-hand corner of your screen.



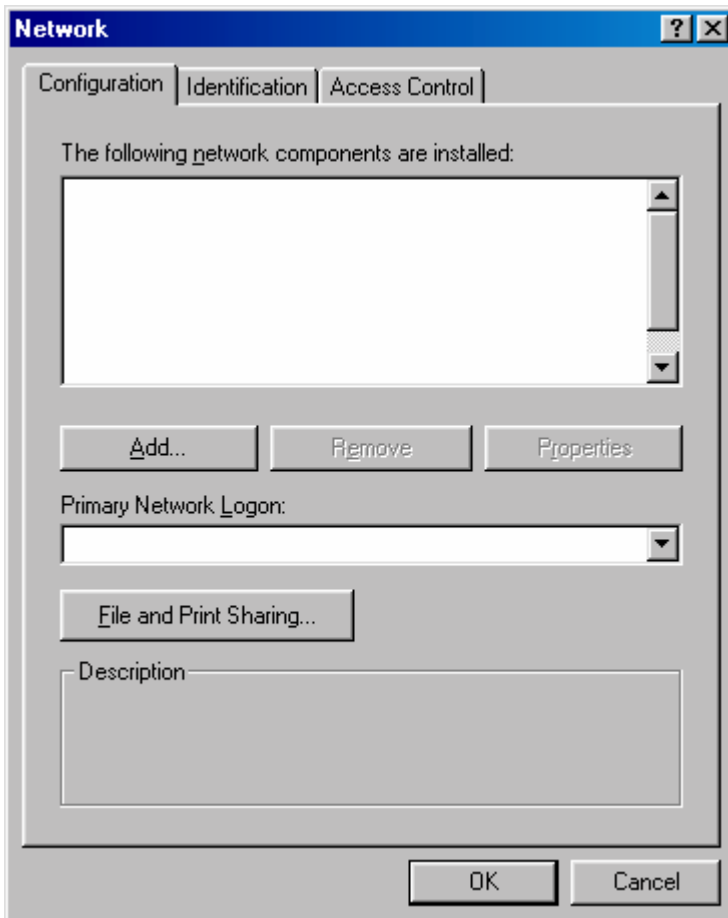
From there, choose **Settings**, and then click on **Control Panel**.

Once the Control Panel window opens, double click on the "**Network**" icon.



Step 2:

Once you have clicked on the **Network** icon, the following window will appear.



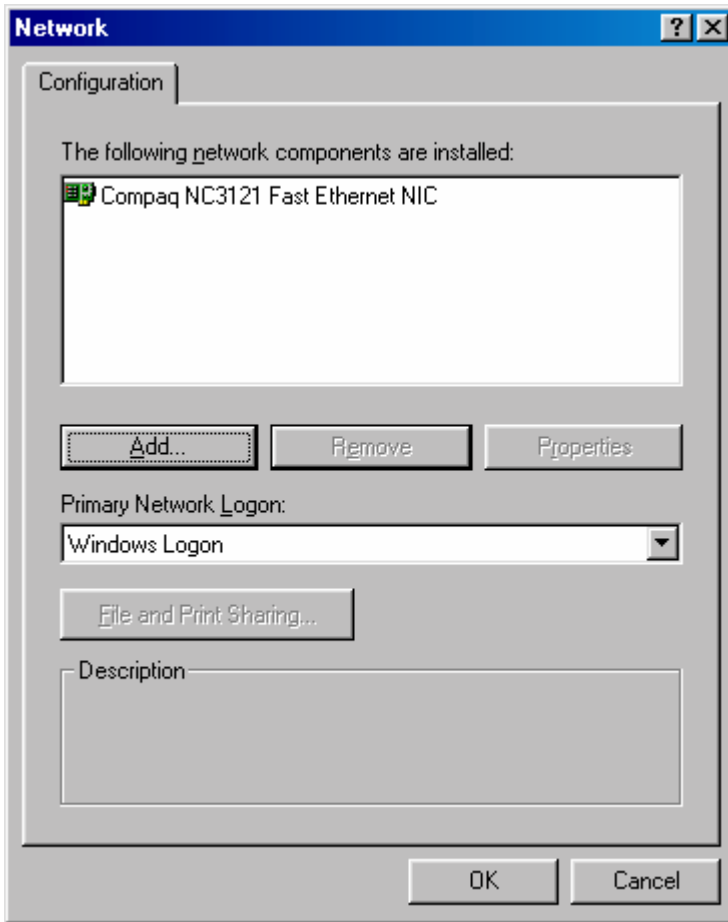
Please Note:

The contents in the white box will be different depending on what computer you are using.

Remove anything containing **IPX/SPX** or **TCP/IP** until you are left with nothing but your Network Adapter, which has an icon like this one:



Go to the next page to see what your screen should look like at this point.



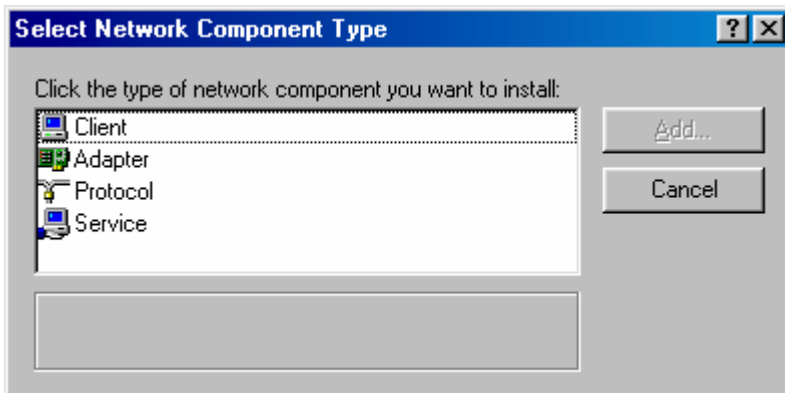
Again, your card may vary from the card that is listed here, but should have the same icon.

If your screen does not look like this one, refer to the troubleshooting guide. If the guide does not resolve your difficulties, then please call the Mars Hill College Computer Helpdesk at **x1444**.

Step 3:

We will now install the appropriate network protocols. Be sure you have your Windows 95/98 CD on-hand.

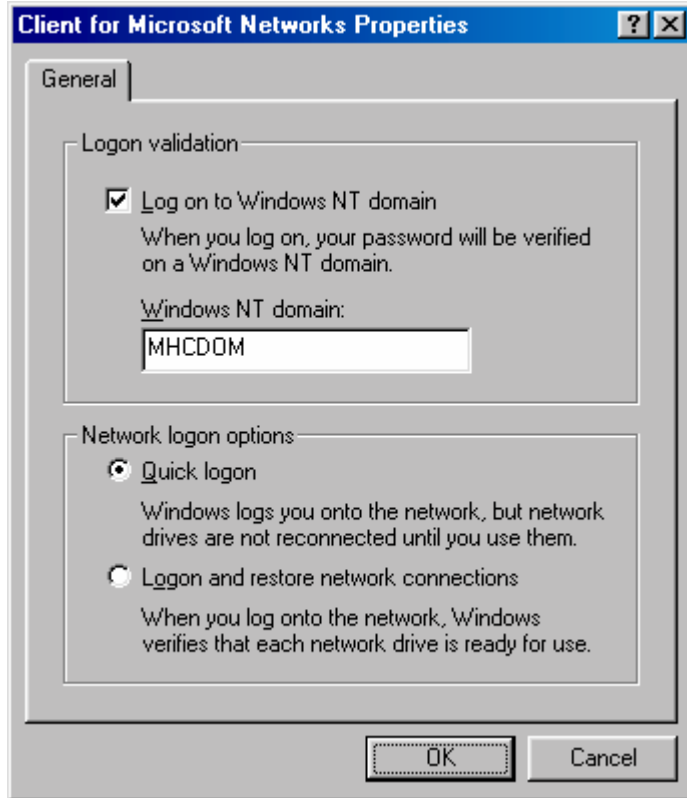
Within the **Network** dialog box, click the **Add** button.



From this box, choose **Client**. Another box will appear.

On the **Manufacturers** side, choose **Microsoft**, and on the **Network Clients** side, choose **Client for Microsoft Networks**.

You will then be sent back to the **Network** dialog box. Highlight **Client for Microsoft Networks**, and then click the **Properties** button.



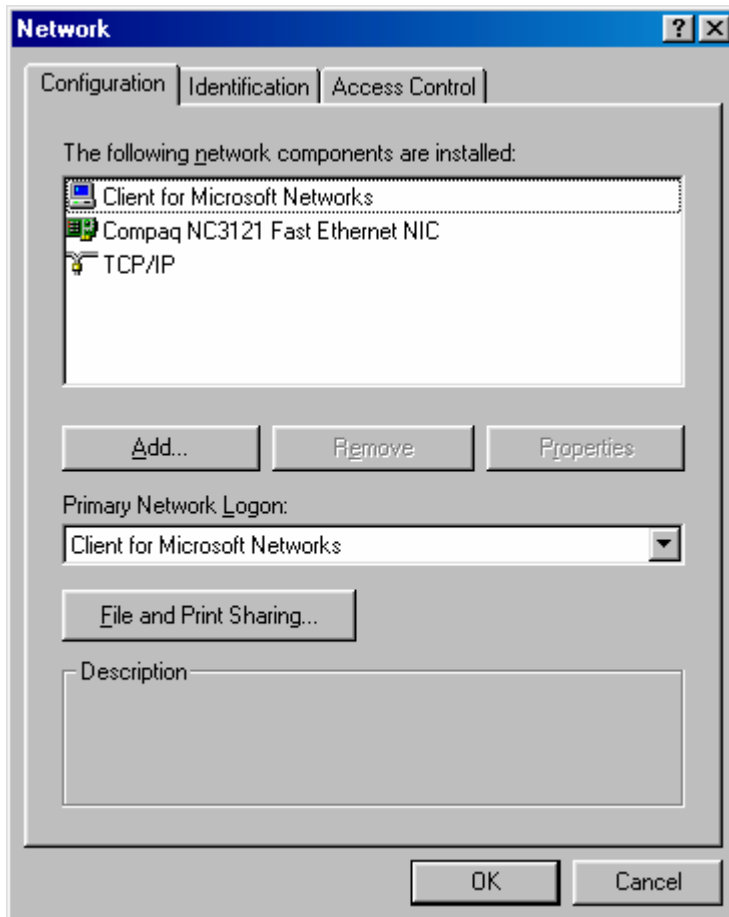
Make your screen look like the picture on the right.

Be sure the **Log on to Windows NT domain** is checked and that the **Windows NT domain** box is set to MHCDOM.

Under **Network logon options**, be sure the **Quick logon** option is selected.

You may now close this window by clicking **Ok**.

Your screen should now look something like this:



Again, the Network Adapter may not be the same as this one, but it will have the same icon:



You should have the Client, the adapter, and TCP/IP. If your screen looks like the one to the left, then click **Ok**.

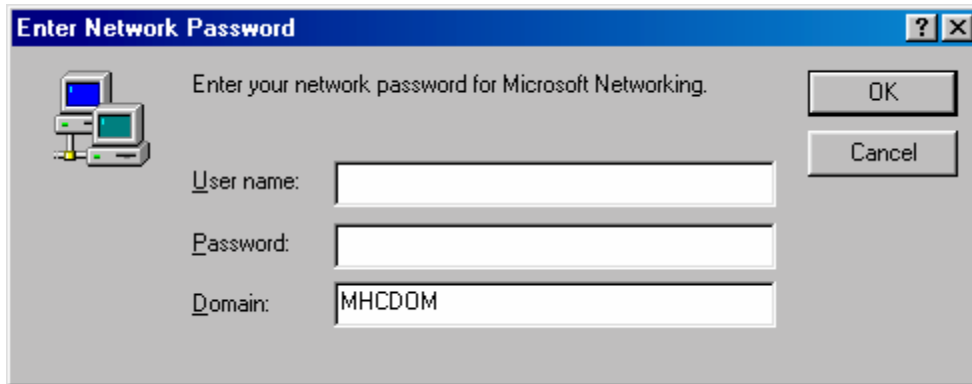
Otherwise, refer to the troubleshooting guide. If this guide does not help, then call the Mars Hill College Helpdesk at **x1444**.

Once you click **Ok**, your machine may prompt you for your Windows 95/98 CD. If so, then insert your CD and point the dialog box to **D:\WIN95** or **D:\WIN98** (Where D is the letter of your CDROM)

After you have completed everything up to this point, you will now be asked to restart your computer. Choose **Yes**.

Step 4:

Once your computer restarts, you should see the following login screen.



If this screen did not appear, then you did not successfully complete one of the previous steps. Please start back at Step 1. If you still do not receive a login screen at this point, then please refer to the troubleshooting guide. If the guide does not resolve your problem, please call the Mars Hill College Helpdesk at **x1444**.

If you did receive this screen, then input your username and password.

Congratulations! You should now be able to access the Mars Hill College Network.
