

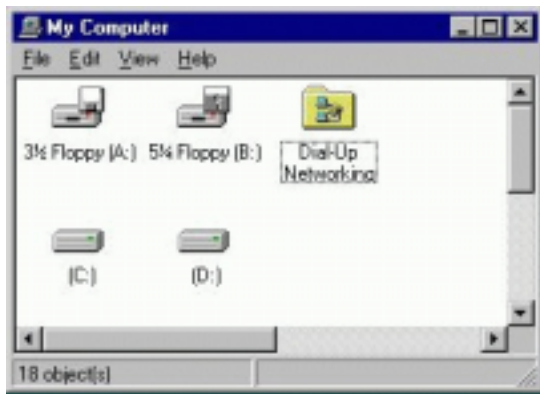
Dial-Up Adapter Setup for Windows 9x

This document will lead you through setting up Dial-Up Networking. Have your Windows 9x CD or floppy disks handy. You will probably need them. Make sure your computer is on and running Windows 9x and follow the steps below carefully.

Step One - Setting up Dial-Up Networking

First, you need to determine if Dial-Up Networking is installed.

Double click My Computer



If you do not see Dial-Up Networking icon, you will have to install it. Put your Windows 9x CD or install disks into the drive when requested to do so by the installation program (see below). If you do see the Dial-Up Networking icon, skip to the section about adding the TCP/IP protocol.

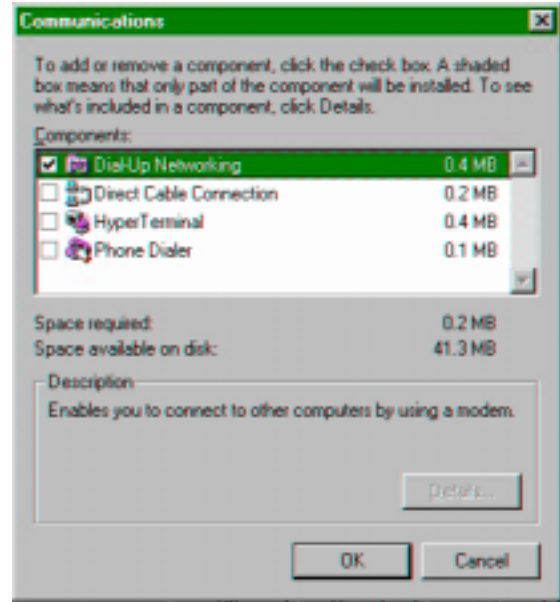
Installing Dial-Up Networking

To install Dial-Up networking, select Start | Settings | Control Panel. (Note: when you see “|” between words like “Start” and “Settings” it means open the Start menu and select Settings, and so on.)

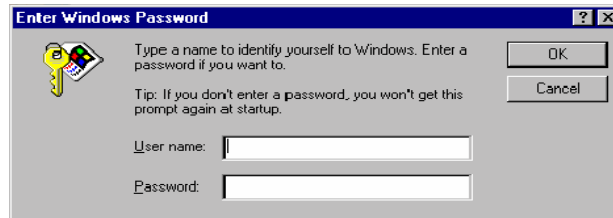


Double click the Add/Remove Programs icon. Select Windows Setup. Double click Communications. You should have the following.

Dial-Up Networking should be checked. Click 'OK' and 'Apply'. Follow any instructions given by the setup wizard (This is the time when your Windows 9x Disks/CD-ROM may be needed). Your computer may tell you to reboot at this point. Click to continue..



Should you have to reboot, you will be prompted for a username and password before you get back to the Windows 9x desktop. Supply a username (your name will do) but **LEAVE THE PASSWORD FIELD BLANK!** Click OK to confirm the blank password. This step will stop the password screen from coming up every time you start Windows 9x.

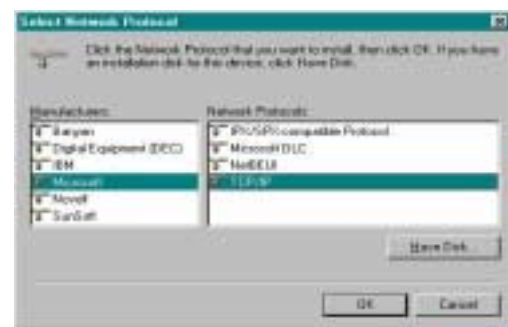


Adding the TCP/IP Protocol

Now that Dial-Up Networking is installed, you must now add the TCP/IP protocol. Now select Start | Settings | Control Panel. Double click the Network Icon. The Network object opens with the configuration tab selected.

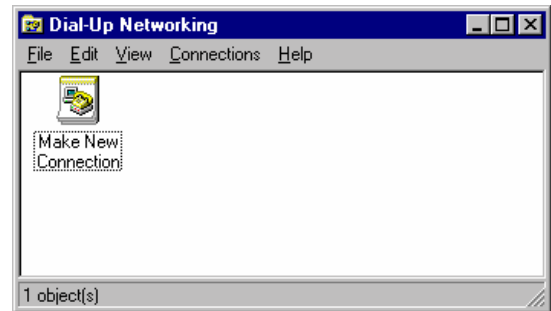
Select: Add | Protocol | Add | Microsoft | TCP/IP

Select 'OK'. Click OK again. It may ask you for your Windows 9x disks again. If it does, it may also ask you if you would like to restart your machine. Click 'Yes' and allow your machine to restart.



Step Two - Making a Connection

Double click My Computer | Dial-Up Networking. Double click Make New connection. Give it a name such as “MHC Dial-In.” Make sure a valid modem is selected. Then click ‘Next’. Put in the phone number of the MHC server which is 689-6500. Then click ‘Next’ and then ‘Finish’.

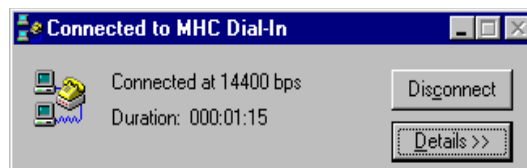


Go to Dial-Up Networking (in My Computer). Right click on the MHC Icon and select Properties. Uncheck “Use country code and area code.” “Connect using” should be set to a valid modem. (Note: It is beyond the scope of this document to provide information about how to install or setup your modem).

Testing your connection

Double click on the MHC Dial-In icon. Enter your username and password. Press the connect button. The modem should dial the number and connect.

Figure 2.31



Step Three - Disconnecting the Dial-Up Connection

To disconnect the dial-up connection, maximize the “MHC Dial-In” box, by moving the mouse to the bottom of your Windows 9x screen and clicking on the dial-in entry. To end this connection, click the Disconnect button as shown in Figure 2.31. Now you are out of the MHC Network completely. To check and make sure you disconnected properly, pick up your phone and make sure you can hear a dial tone. If you can, then you have disconnected properly.